

ed

connects you to life

ersozdata

Fiber Optic Products

www.ersozdata.com



Ersoz Data Hakkında

Kurulduğu günden bu yana sahip olduğu Veri merkezi tecrübesini 2020 yılında sektör liderleri ile birlikte yürüttüğü AR-GE çalışmaları ile Veri Merkezi teknolojileri geliştirme alanında kullanarak bu konuda uzmanlaştı.

Ersozdata, 2021 yılında tüm AR-GE süreçlerini tamamlayarak 5G teknoloji altyapı kazanımı konusunda bir ilki başararak ülkemiz Teknoloji Ekonomisine de katkı sağladı.

Misyonumuz

Varlıklarını etkin ve verimli yöneterek, paydaşlarına farklılıklarıyla değer yaratır.

Vizyonumuz

Yatırımlarıyla stratejik sektörlerde uluslararası markalar oluşturarak sürdürülebilir büyüme sağlar.

Kalite Politikamız

Müşteri ve çalışanlarının memnuniyetini yükseltmeyi, iş birliği ve geri bildirim dayalı insan emeğine saygı duyan bir firma olmayı, Tüm ürün ve hizmetlerimizde, ilgili taraf beklentilerine, ulusal/uluslararası standartlara ve uygulanabilir yasal

şartlara uyum sağlamayı, Kalite düzeyini yükseltmek, maliyetleri düşürmek ve karlılığın artırılmasını sağlayacak teknolojik gelişmeleri yakından takip etmeyi ve uygulamayı, Geliştirdiği yeni iş modelleri sayesinde farklı çözümler sunmayı,

Müşteri odaklılık

Faaliyette bulunduğumuz tüm sektörlerde müşteri velinimetimizdir. Bundan dolayı; müşterilerimizin bugünkü ve gelecekteki beklentilerine karşılık vermek ve müşterilerimizin hayatını kolaylaştırarak onlara çözüm ortağı olmak görevimizdir.

PROJE TASARIMI

ve Mühendislik Çalışmaları

SEKTÖRÜNDE DENEYİMLİ EKİBİMİZLE, PROJE
TASARIMDAN UYGULAMAYA KADAR TÜM SÜREÇLERDE
YANINIZDAYIZ.

Plastic Fiber Optic Terminal Box / FTTH Box



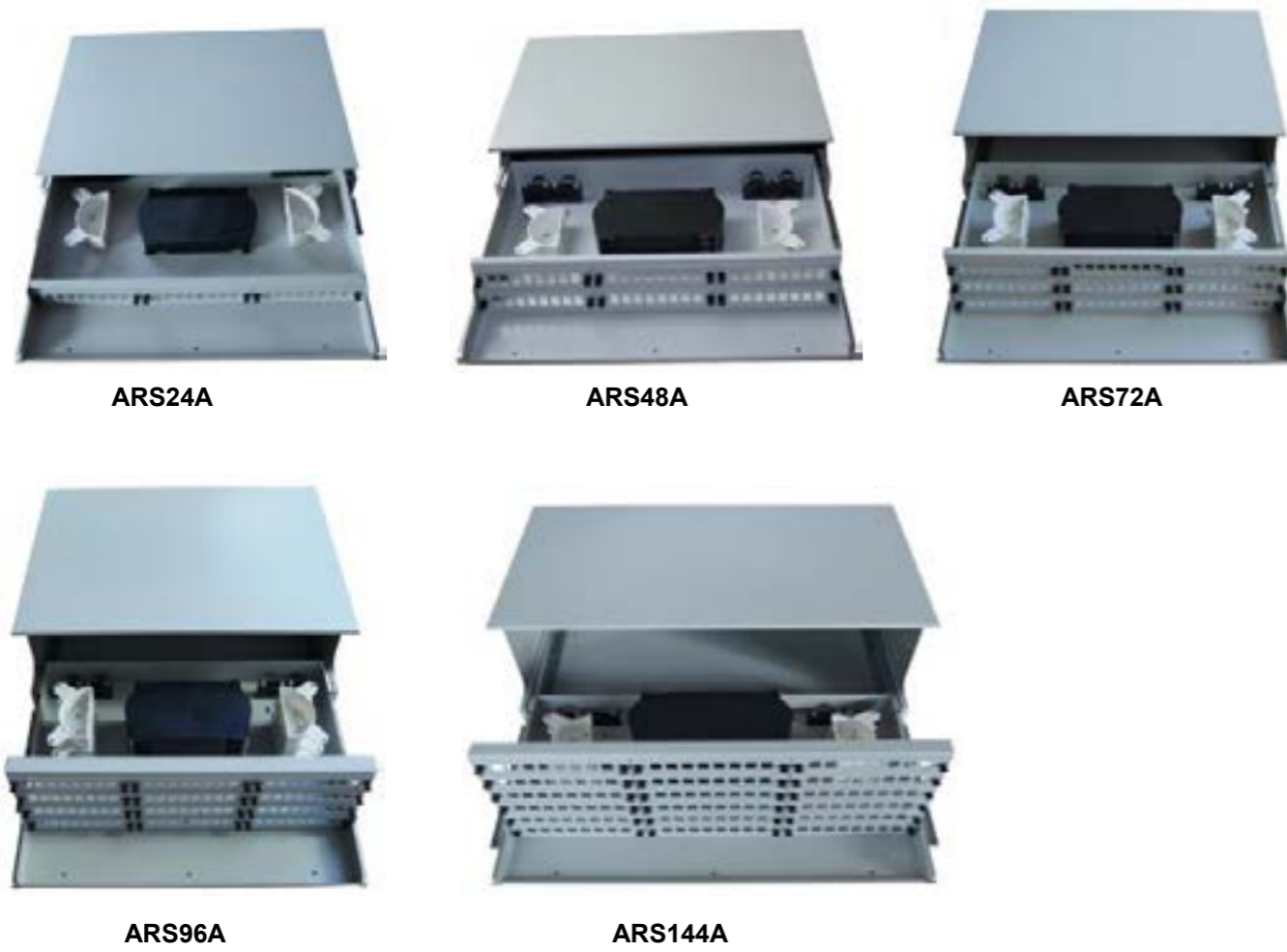
Model	Dimension W*H*D (mm)	Material	Adapter port	Splicing capacity	Cable port	Application
BC08	130x199x28.5	ABS	8 SC simplex	8 fibers	2 ports	Indoor wall mounted; Cable entry without cutting.
BP08	171.4x234.5x47.4	ABS	8 SC simplex	8 fibers	1 PG gland & 8 out ports	Outdoor wall mounted & pole mounted; Can load PLC 1:4, 1:8 splitter.
BR24	193x246.5x53.2	ABS	24 SC simplex	24 fibers	2 ports	Indoor wall mounted; Cable entry without cutting; Two modules: the one is for max. 24 fiber splicing, the other is for load 1 PLC 1:16 splitter & 8 fiber splicing.
BE48	150x226x54.5	ABS	/	48 fibers	1 round & 1 oval & 12 drop cable ports	Indoor wall mounted; Cable entry without cutting.
B0212	206.8x230.8x66.5	ABS	12 SC simplex	12 fibers	2 PG gland & 1 big round & 12 cable ports	Outdoor wall mounted & pole mounted; Can load PLC 1:8 splitter.
B0212A	209.5x260.5x95	PP	12 SC simplex	12 fibers	2 round & 12 cable ports	Outdoor wall mounted & pole mounted; Cable entry without cutting; Can load PLC 1:8 splitter.

Drawer 19inch Fiber Optic Patch Panel



Model	Dimension W*D*H (mm)	Material	Adapter port	Splicing capacity	Application
ARS12	435x317.3x45.5	Cold roll steel	12 SC simplex	12 fibers	19" slidable rack mounted type; With front cable management plate.
ARS24	435x317.3x45.5		24 SC simplex	24 fibers	
ARS48	435x293x88		48 SC simplex	48 fibers	
ARS96	435x294x178		96 SC simplex	96 fibers	
ARS144	435x294x178		144 SC simplex	144 fibers	
ARS24BM	441x293x43.6	Cold roll steel	24 SC simplex	24 fibers	19" slidable rack mounted type
ARS48BM	441x293x43.6		48 SC simplex	48 fibers	
ARS12A45	435x317.3x45.5	Cold roll steel	12 SC simplex	12 fibers	19" slidable rack mounted type; With front cable management plate; Plastic adapter panel.
ARS24A45	435x317.3x45.5		24 SC simplex	24 fibers	

Drawer 19inch Fiber Optic Patch Panel



Model	Dimension W*D*H (mm)	Material	Adapter port	Splicing capacity	Application
ARS24A	438x326.5x69.7	Cold roll steel	24 SC simplex	24 fibers	19" slidable rack mounted type; With front door.
ARS48A	438x326.5x99.7		48 SC simplex	48 fibers	
ARS72A	438x326.5x133		72 SC simplex	72 fibers	
ARS96A	438x326.5x165.7		96 SC simplex	96 fibers	
ARS144A	438x326.5x231.7		144 SC simplex	144 fibers	

Inline Type Fiber Optic Splice Closure



Model	Dimension L*W*H (mm)	Material	Splice tray	Max. capacity	Cable port	Application
CH005	466.5x179.8x120.6	ABS	6 tray 12~24FO	144 fibers	4 ports	Outdoor aerial hanged, wall mounted
CH004	466.5x179.8x120.6	ABS	6 tray 12~24FO	144 fibers	6 ports	
CH009	466.5x179.8x120.6	ABS	6 tray 12~24FO	144 fibers	8 ports	
CH002S	320x136x66	ABS	3 tray 12~24FO	72 fibers	4 ports	Outdoor aerial hanged, wall mounted
CH023	320x136x66	ABS	3 tray 12~24FO	72 fibers	4 ports	
CH016	466x184.2x94	ABS	2 tray 24FO	48 fibers	4 ports	Outdoor aerial hanged, wall mounted; Can load 10 SC simplex adapter & PLC 1:8 splitter; 2 entry port & 2 drop cable port for 16pcs 2*3mm drop cable.

Dome Type Fiber Optic Splice Closure



CV002

CV007



CV003

Model	Dimension D*H (mm)	Material	Splice tray	Max. capacity	Cable port	Application
CV002	Φ170.5x441	ABS	5 tray 12~24FO	120 fibers	4 ports	Outdoor aerial hanged, pole mounted, wall mounted; Mechanical sealing.
CV003	Φ170.5x441	ABS	5 tray 12~24FO	120 fibers	6 ports	
CV007	Φ189x501.5	ABS	6 tray 24FO	144 fibers	6 round or 1 oval & 4 round ports	Outdoor aerial hanged, pole mounted, wall mounted; Heat shrinkable sealing.

Dome Type Fiber Optic Splice Closure



CV009

CV010

CV011



CV012



CV013

Model	Dimension D*H (mm)	Material	Splice tray	Max. capacity	Cable port	Application
CV009	Φ140x300.5	ABS	4 tray 6~12FO	48 fibers	3 round & 1 oval port	Outdoor aerial hanged, pole mounted, wall mounted; A type hoop; Heat shrinkable sealing.
CV010	Φ146x300.5	PP	4 tray 6~12FO	48 fibers	3 round & 1 oval port	Outdoor aerial hanged, pole mounted, wall mounted; B type hoop; Heat shrinkable sealing.
CV011	Φ146x310.5	PP	4 tray 6~12FO	48 fibers	4 round port	Outdoor aerial hanged, pole mounted, wall mounted; B type hoop; Mechanical sealing.
CV012	Φ168x434.5	PP	5 tray 12~24FO	120 fibers	3 round & 1 oval port	Outdoor aerial hanged, pole mounted, wall mounted; Heat shrinkable sealing.
CV013	Φ168x424.5	PP	5 tray 12~24FO	120 fibers	4 round port	Outdoor aerial hanged, pole mounted, wall mounted; Mechanical sealing.

Fiber Optic Splitter

Fiber optic splitter is used to split a fiber optic beam into several beams at a certain splitting ratio. It is an important passive device in passive optical network (EPON, GPON, BPON, FTTX, FTTH, etc.)

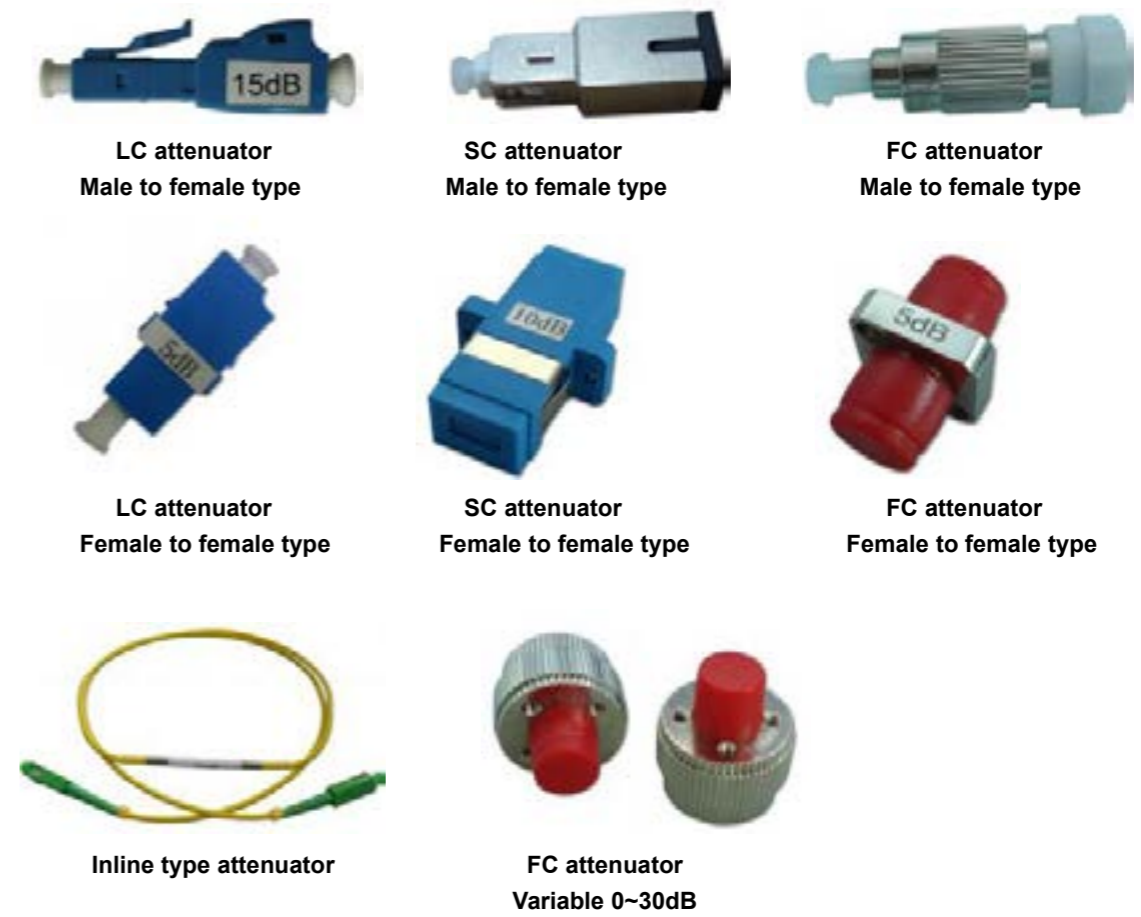


Order information:

- 1) FBT, PLC splitter; SM, MM
- 2) 1x2, 1x4, 1x8 ..., 2x2, 2x4, 2x8 ...
- 3) Operating wavelength
- 4) Splitting ratio
- 5) Input & output fiber length, cable diameter; with or without connector (SC, LC, FC, ST ...)
- 6) Steel tube type, ABS box type

Fiber Optic Attenuator

Fiber optic attenuator is a device used to reduce the power level of an optical signal. There are Connector (male to female) type, Adapter (female to female) type, In-line type and Variable type.



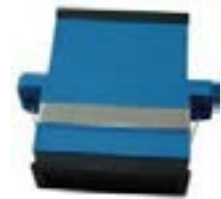
Specification:

Operating wavelength	nm	1310, 1550
Attenuation range	dB	1~30
Return loss	dB	≥50
Working temperature	°C	-25 ~ +75
Storage temperature	°C	-40 ~ +85

Fiber Optic Adapter

Fiber optic adapter is the mechanical device designed to align fiber-optic connectors. It contains the interconnect ceramic sleeve, that holds the two ferrules together. There are SC, LC, FC, ST, MU, MTRJ, MPO, ... different types.

Features: low insertion loss; good compatibility, reliability & stability; high precision.



SC/UPC SM duplex



SC/UPC SM simplex



SC/UPC SM simplex without flange



SC/UPC MM duplex



SC/APC SM simplex



SC/UPC SM simplex with shutter



LC/UPC SM simplex



LC/UPC SM duplex



LC/UPC MM duplex



LC/APC SM quad



LC/UPC SM quad



LC/UPC MM quad

SC & LC plastic adapter color:

SM UPC: blue

SM APC: green

MM UPC: grey

OM3/OM4 UPC: aqua

Fiber Optic Adapter



FC simplex small D



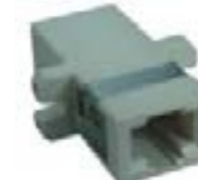
FC simplex square



ST simplex



MPO



MTRJ



MU



FC-SC hybrid adapter



LC-SC hybrid adapter



SC male - LC female hybrid adapter

Specification:

Parameter	SC, LC, FC, ST	MU, MTRJ, SMA	DIN, D4	MPO
Insertion Loss (Typical)	≤0.2dB	≤0.2dB	≤0.2dB	≤0.2dB
Insertion Loss (Max.)	≤0.3dB	≤0.3dB	≤0.3dB	≤0.3dB
Repeatability	≤0.2dB	≤0.2	≤0.2	≤0.2
Exchangeability	≤0.1dB	≤0.1	≤0.1	≤0.1
Durability	>1000 times	>500 times	>500 times	>500 times
Operating Temperature	-40°C ~ +75°C	-40°C ~ +75°C	-40°C ~ +75°C	-40°C ~ +75°C
Storage Temperature	-45°C ~ +85°C	-45°C ~ +85°C	-45°C ~ +85°C	-45°C ~ +85°C

Fiber Optic Patch Cord

Fiber optic patch cord is a fiber optic cable assembled connectors at both ends that allow it to be rapidly and conveniently connected to CATV, an optical switch or other telecommunication equipment. It is used to attach one device to another for signal routing.



SC/APC-SC/APC SM simplex



FC/UPC-FC/UPC MM simplex



FC/UPC-ST/UPC SM duplex



LC/UPC-MTRJ/UPC OM3 duplex



MPO/APC - SC/UPC SM 12FO

Fiber Optic Pigtail

Fiber optic pigtail is an optical fiber cable that has optical connector pre-installed at one end and a length of fiber at the other end.



Simplex 0.9mm FC/UPC SM pigtail



Simplex 0.9mm SC/UPC MM pigtail



Simplex 0.9mm LC/UPC OM3 pigtail

Fiber Optic Pigtail



12 color 0.9mm pigtail FC/UPC SM



Bundle fan out pigtail FC/UPC SM



Ribbon fan out pigtail FC/UPC SM



Break out pigtail FC/UPC SM



Armoured optical fiber pigtail SC/UPC SM



Waterproof pigtail FC/APC SM

Fiber optic patch cord & fiber optic pigtail

Order information:

- 1) Connector type: SC, LC, FC, ST, MU, MTRJ, MPO, DIN, ...
- 2) Polishing type: UPC, APC
- 3) Fiber type: Single mode(G.652, G.657, G.655), multimode (OM1, OM2, OM3, OM4) ...
- 4) Cable type: simplex, duplex, 4, 6, 8, 12, 24 ... fibers
- 5) Cable diameter: 0.9mm, 2.0mm, 3.0mm,
- 6) Cable jacket: PVC, LSZH, PE
- 7) Cable color: yellow, orange, aqua,
- 8) Cable length: 1, 2, 3meters, ... other customized

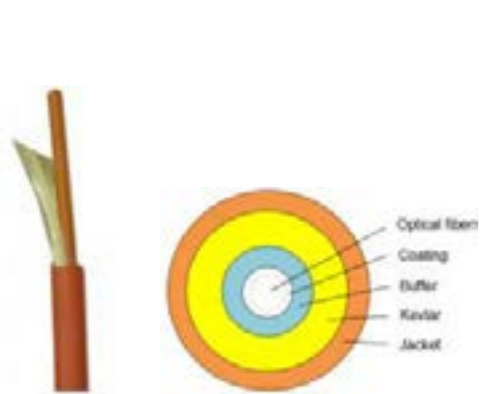
Fiber Optic Cable

Fiber optic cable is a cable containing one or more optical fibers that are used to carry light for information transmission. There are Single mode (G.652D, G.657A, G.657B, G.655C....), Multi-mode (OM1, OM2, OM3, OM4) fiber.

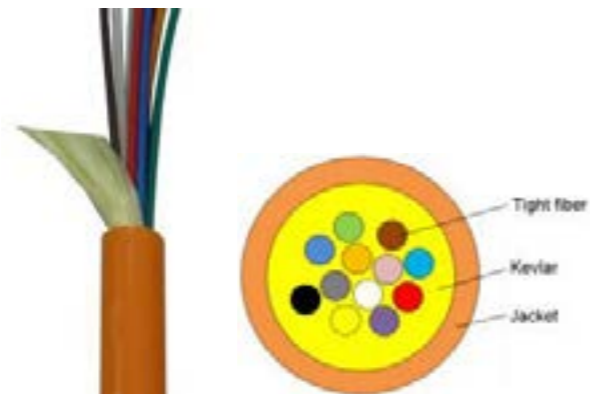
Application

Use in pigtails and patch cords, optical network cabling
Used in optical communication rooms, optical distribution frames / boxes, optical apparatus and equipments.

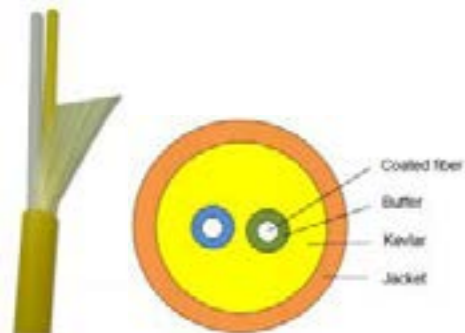
Simplex round optical fiber cable:



Bundle optical fiber cable:



Duplex round optical fiber cable:

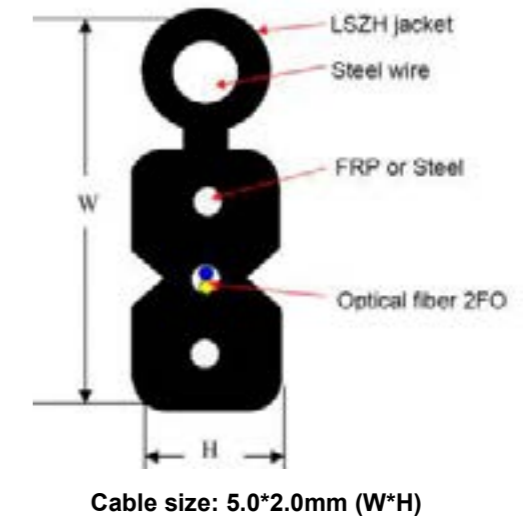
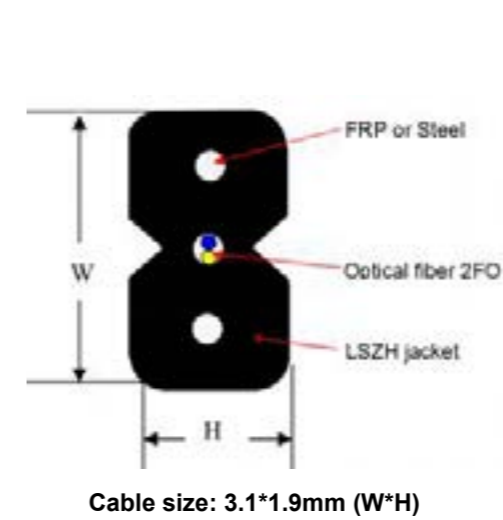


Duplex zipcord optical fiber cable:



FTTH Drop Cable

FTTH drop cable is good to use for fiber to the home last mile solution. It can be 1, 2, 4 cores and G.657A, G.652D fiber.



Other fiber optic products



Copper Cables

Category 5e U-F/UTP 100MHz LAN Cables

ERSOZ CAT 5e F and U/UTP LAN Data Cable is an enhanced performance cable used for transmission of high speed data, digital and analogue voice and video RGB signals on LANs. It supports gigabit ethernet (1000 baseT) standard and operates at bandwidths upto 100 MHZ.

Max. tensile load : 10kg per simplex cable (installation)
Min. bend radius : 8 x outer diameter (installation)
4 x outer diameter (operation)
Temperature : 0°C to +50°C (installation)
-10°C to +60°C (operation)

CAT 6 U-F/UTP LAN Cables

ERSOZ CAT 6 F and U/UTP LAN Data Cable is an enhanced performance cable used for transmission of high speed data, digital and analogue voice and video RGB signals on LANs. It supports Gigabit Ethernet (1000 baseT) standard and operates at bandwidths up to 250 MHZ.

Max. tensile load : 10kg per simplex cable (installation)
Min. bend radius : 8 x outer diameter (installation)
4 x outer diameter (operation)
Temperature : 0°C to +50°C (installation)
-10°C to +60°C (operation)

Category 6A U-F/UTP

ERSOZ CAT 6A F and U/UTPLAN Data Cable is an enhanced performance cable used for transmission of high speed data, digital and analogue voice and video RGB signals on LANs. It supports Gigabit Ethernet (1000 baseT) standard and operates at bandwidths up to 500 MHZ.

Max. tensile load : 10kg per simplex cable (installation)
Min. bend radius : 8 x outer diameter (installation)
4 x outer diameter (operation)
Temperature : 0°C to +50°C (installation)
-10°C to +60°C (operation)

Category 7 and 7A S/FTP

ERSOZ CAT 7 and 7A S/FTP LAN Data Cable is an enhanced performance cable used for transmission of high speed data, digital and analogue voice and video RGB signals on LANs. It supports Gigabit Ethernet (10G BASE-T) standard and operates at bandwidths up to 1000 MHZ.

Max. tensile load : 10kg per simplex cable (installation)
Min. bend radius : 8 x outer diameter (installation)
4 x outer diameter (operation)
Temperature : 0°C to +50°C (installation)
-10°C to +60°C (operation)

Product Benefits

The cable supports gigabit ethernet protocol for installation in horizontal and backbone applications.



CAT 5e -F/UTP

CAT 5e -U/UTP



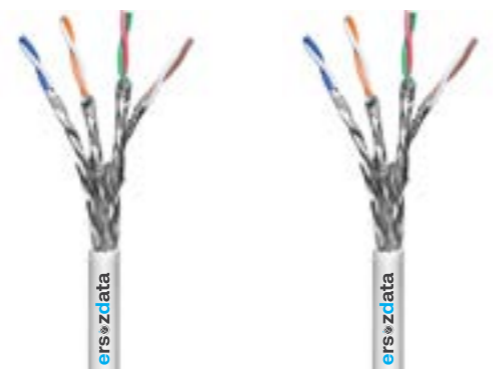
CAT 6 -F/UTP

CAT 6 -U/UTP



CAT 6A -F/UTP

CAT 6A -U/UTP



CAT 7-S/UTP

CAT 7A-S/UTP

Copper Patch Cords

Category 5e UTP Patch Cords

ERSOZ CAT 5e UTP LAN Data Cable Patch Cord is an enhanced performance patchcord used for transmission of high speed data, digital and analogue voice and video RGB signals on LANs. It supports Gigabit Ethernet (1000 BASE-T) standard and operates at bandwidths up to 100 MHZ.

Insulation HDPE
Stranding 4 twisted pairs
Pair shielding LSZH FR (Flame Retardant) or PVC
Installation Temperature -30° +60°



CAT 5e Patch Cord

Category 6 UTP Patch Cords

ERSOZ CAT 6 UTP LAN Data Cable Patch Cord is an enhanced performance patchcord used for transmission of high speed data, digital and analogue voice and video RGB signals on LANs. It supports Gigabit Ethernet (1000 BASE-T) standard and operates at bandwidths up to 250 MHZ.

Stranding 4 twisted pairs
Pair shielding LSZH FR (Flame Retardant) or PVC
Installation Temperature -30° +60°



Category 6 UTP Patch Cords

Category 6A UTP Patch Cords

ERSOZ CAT 6A UTP LAN Data Cable Patch Cord is an enhanced performance patchcord used for transmission of high speed data, digital and analogue voice and video RGB signals on LANs. It supports Gigabit Ethernet (10G BASE-T) standard and operates at bandwidths up to 500 MHZ.

Stranding 4 twisted pairs
Pair shielding LSZH FR (Flame Retardant) or PVC
Installation Temperature -30° +60°



Category 6A UTP Patch Cords

Category 5e FTP Patch Cords

ERSOZ CAT 5e FTP LAN Data Cable Patch Cord is an enhanced performance patchcord used for transmission of high speed data, digital and analogue voice and video RGB signals on LANs. It supports Gigabit Ethernet (1000 BASE-T) standard and operates at bandwidths up to 100 MHZ.

Stranding 4 twisted pairs
Pair shielding LSZH FR (Flame Retardant) or PVC
Installation Temperature -30° +60°



Category 6A UTP Patch Cords

Category 6 FTP Patch Cords

ERSOZ CAT 6 FTP LAN Data Cable Patch Cord is an enhanced performance patchcord used for transmission of high speed data, digital and analogue voice and video RGB signals on LANs. It supports Gigabit Ethernet (1000 BASE-T) standard and operates at bandwidths up to 250 MHZ.



Category 6A UTP Patch Cords

Copper Patch Panel

24 Port UTP Category 6 Patch Panel 1U

ERSOZ CAT.6 UTP Patch Panel is an enhanced performance patch panel used for transmission of high speed data, digital and analogue voice and video RGB signals on LANs. It supports Gigabit Ethernet (1000 BASE-T) standard and operates at bandwidths up to 100 MHz.

Highlights

24 Port unshielded RJ45 jacks
Contacts are phosphor bronze plated with 50 micro inches hard gold Class D (100MHz) acc. to ISO/IEC 11801 and EN50173
Printed with color code TIA 568A/B, 8 pole LSA terminals
19" steel sheet housing



48 Port UTP Category 5e Patch Panel 2U

ERSOZ CAT.5e UTP Patch Panel is an enhanced performance patch panel used for transmission of high speed data, digital and analogue voice and video RGB signals on LANs. It supports Gigabit Ethernet (1000 BASE-T) standard and operates at bandwidths up to 100 MHz.

Highlights

48 port unshielded RJ45 jacks
Contacts are phosphor bronze plated with 50 micro inches hard gold Class D (100MHz) acc. to ISO/IEC 11801 and EN50173
Printed with color code TIA 568A/B, 8 pole LSA terminals
19" steel sheet housing



24-48 Port FTP Category 6 Patch Panel 1U

ERSOZ CAT.6 FTP Patch Panel is an enhanced performance patch panel used for transmission of high speed data, digital and analogue voice and video RGB signals on LANs. It supports Gigabit Ethernet (1000 BASE-T) standard and operates at bandwidths up to 250 MHz.

Highlights

24-48 Port shielded RJ45 jacks
Contacts are phosphor bronze plated with 50 micro inches hard gold Class D (250MHz) acc. to ISO/IEC 11801 and EN50173
Printed with color code TIA 568A/B, 8 pole LSA terminals
19" steel sheet housing



24-48 Port FTP Category 6A Patch Panel 1U

CAT.6A FTP Patch Panel is an enhanced performance patch panel used for transmission of high speed data, digital and analogue voice and video RGB signals on LANs. It supports Gigabit Ethernet (10G BASE-T) standard and operates at bandwidths up to 500 MHz.

Highlights

24-48 Port shielded RJ45 jacks
Contacts are phosphor bronze plated with 50 micro inches hard gold Class D (500MHz) acc. to ISO/IEC 11801 and EN50173
Printed with color code TIA 568A/B, 8 pole LSA terminals
19" steel sheet housing





connects you to life

Ömerli Mahallesi No.10
Sırapınar-Ömerli Yolu
34794 Çekmeköy,
İstanbul-Türkiye
+90 216 435 70 48
+90 505 660 21 64
info@ersozdata.com
www.ersozdata.com